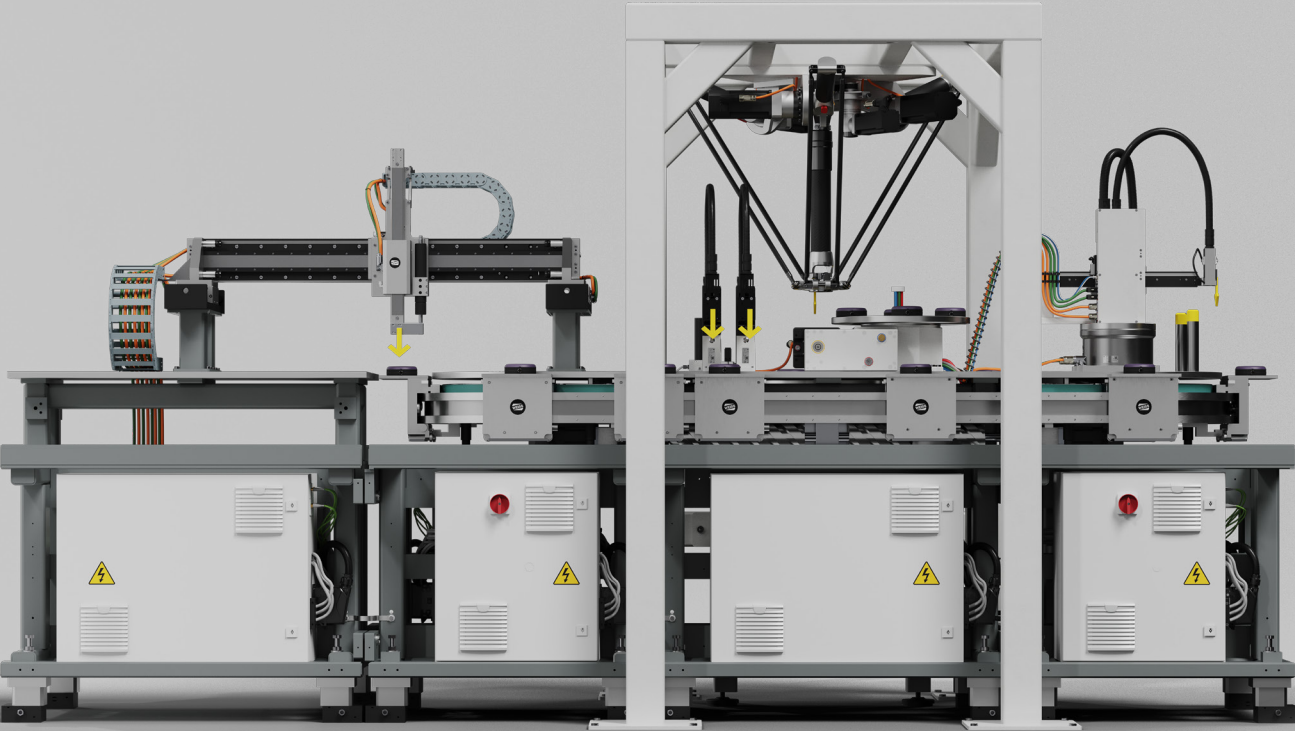


EVERY MOTION STARTS WITH WEISS

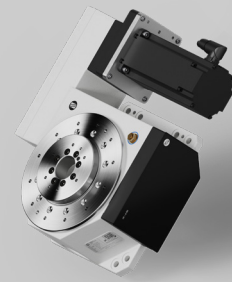
 **ADVANCED  
MOTION PLATFORMS**



**A**

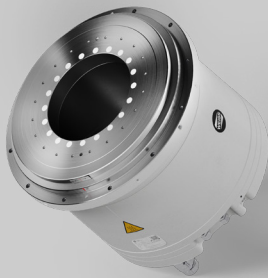
### DR DELTA ROBOTS

The DR Robot Series is suitable for quickly repositioning, packaging, assembling and sorting, making it ideal for classic pick-and-place tasks. Robot solutions from WEISS show their strengths particularly in applications that require a high degree of dynamics, repeat accuracy and a high load.

**B**

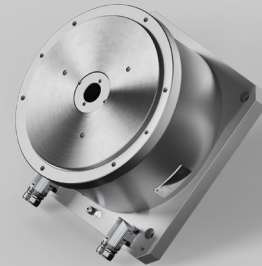
### NC ROTARY INDEXING TABLES

The freely programmable Rotary Indexing Tables are particularly attractive for line production and flow manufacturing. The height of the tables is the same over many variants, so no compensation elements are required.

**C**

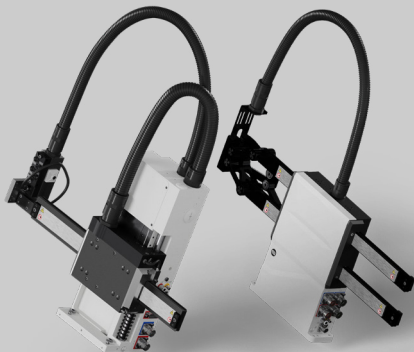
### TO TORQUE ROTARY TABLE

The TO Rotary Indexing Table is freely programmable and directly driven. The torque motor ensures short cycle times, while the directly connected measuring system ensures high precision.

**D**

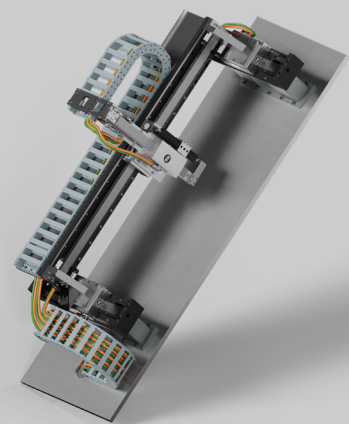
### TO TORQUE ROTARY TABLE

The TO Rotary Indexing Table is freely programmable and directly driven. The torque motor ensures short cycle times, while the directly connected measuring system ensures high precision.

**E**

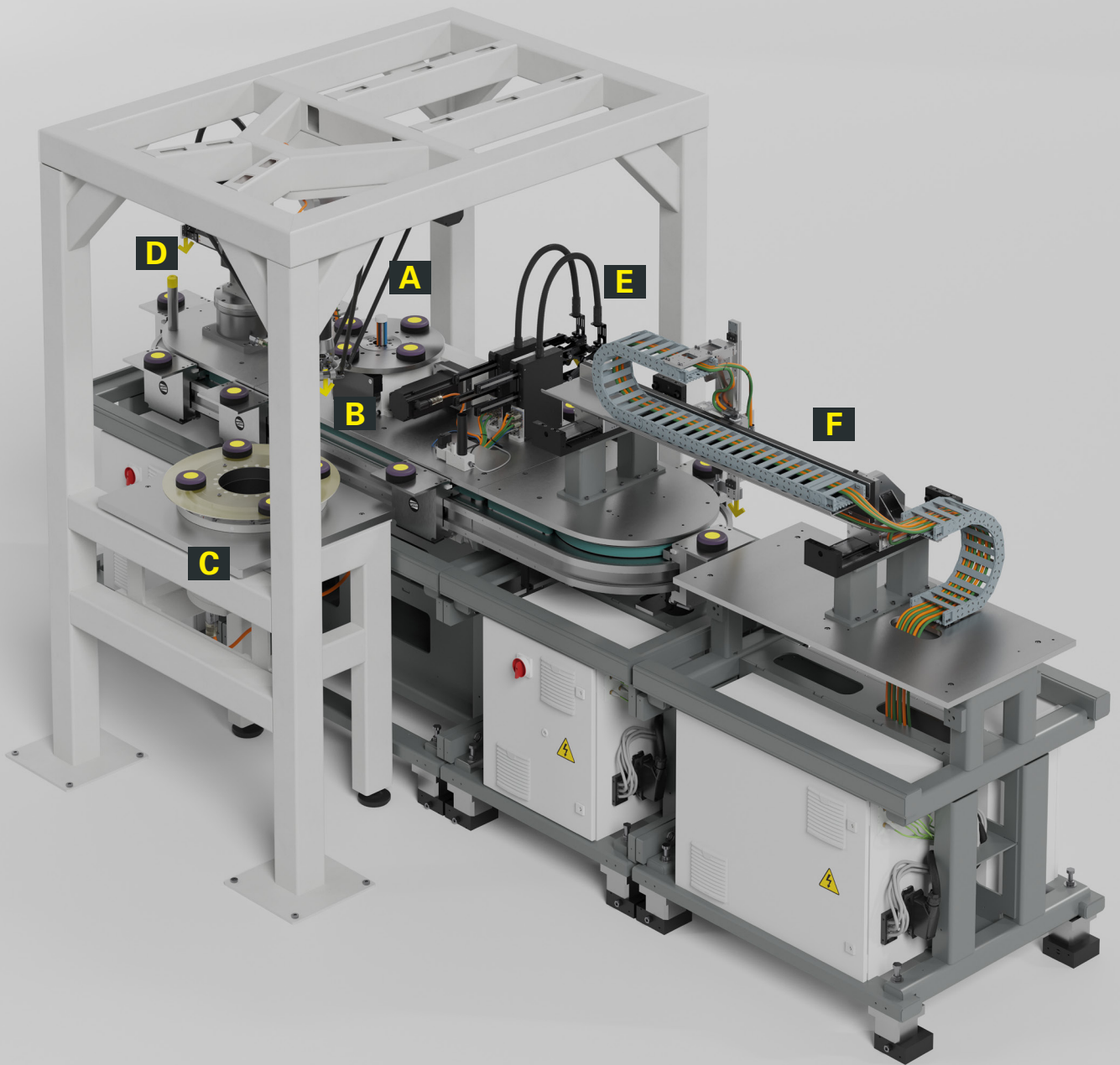
### HP PICK & PLACE UNITS

The HP Pick & Place Modules can be used for very fast and precise movements. Short handling times increase the productivity in assembly automation. Thanks to their compact design, the HP Modules save space when integrated into process flows.

**F**

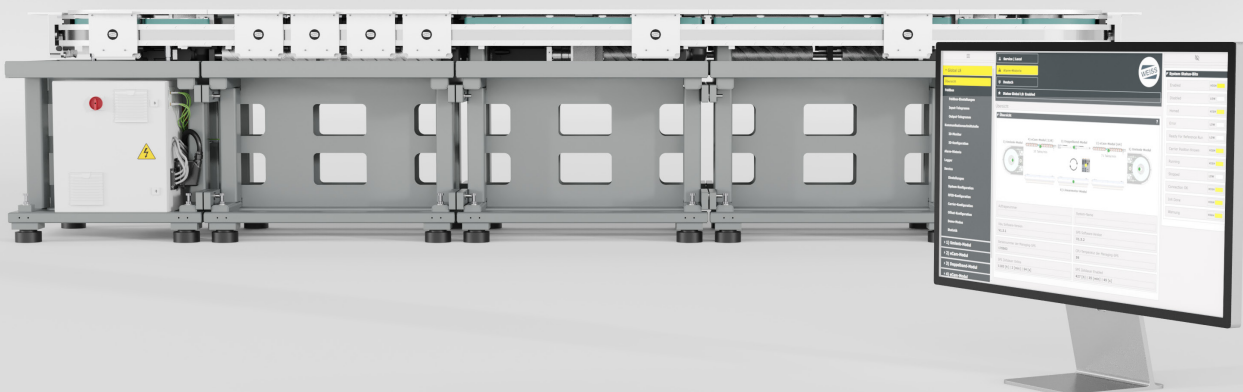
### GANTRY SYSTEMS

WEISS combines its Linear Motor Axes to make high-precision Gantry Systems. The Gantry Systems are tailored to the customer requirements. The applications range from medical technology and life sciences in all areas where dispensing tasks or high-precision microassembly processes are required.




**CONTROL PACKAGE**  
**W.A.S. 2 LS**

W.A.S. 2 LS has preset parameters, which make it easier to commission the WEISS Linear Transfer Systems. Only application data such as indexing, travel distance, loading, speed and acceleration has to be added. The user is guided by clear instructions on the graphical user interface. Extremely fast processes can be implemented with the sequence programming directly in the drive controller.



## ROTARY INDEXING TABLE CONTROLLERS EF3

In single-shift operation where few cycles and long waiting periods are the rule, the EF3 is particularly energy efficient. When there is a high number of time-critical cycles with high dynamics, the drive controller impressively delivers full performance for the motor and simultaneously protects the brake coil against wear. Default parameters and a keypad for operation make commissioning easier.



- ✓ Easy to operate thanks to keypad
- ✓ Fully automatic optimization cycle
- ✓ Rapid error analysis and cumulated error display
- ✓ IEnergy-saving mode

## CONTROL PACKAGE W.A.S. 2 COMPACT

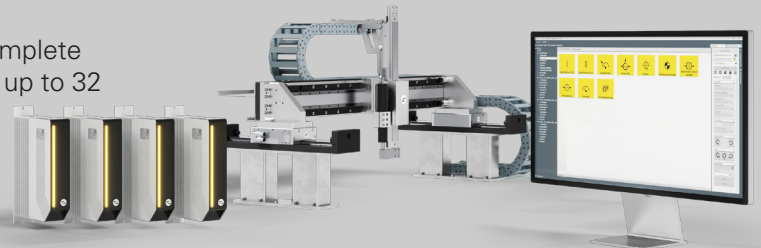
The W.A.S. 2 COMPACT Control Package is a complete package consisting of hardware and software. Thanks to the WEISS Application Software, commissioning the components is extremely easy. Up to 4 axes can be controlled with W.A.S. 2 COMPACT. Application-relevant services and a web-based interface make it easier to operate.



- ✓ Very convenient to operate thanks to preset parameters and web-based user interface
- ✓ Control up to four axes
- ✓ Variety of safety functions available
- ✓ Interfaces: Profinet, EtherCAT, EtherNet/IP

## CONTROL PACKAGE W.A.S. 2 SCALABLE

The W.A.S. 2 SCALABLE Control Package is a complete package consisting of hardware and software for up to 32 axes. Application-relevant services and a Windows-based interface make it easier to operate. Numerous interfaces and standards ensure excellent system connectivity.



- ✓ Very convenient to operate thanks to preset parameters and web-based user interface
- ✓ Control up to 32 axes
- ✓ Networking of multiple handling components with additional linear or rotary axes
- ✓ Extensive interfaces available

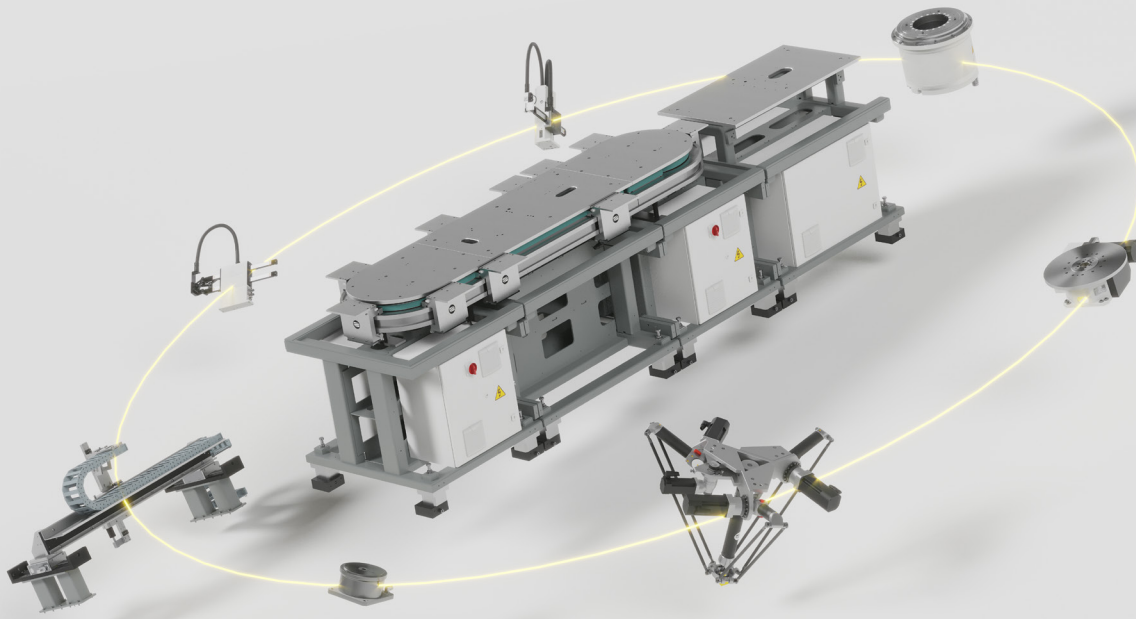
## CONTROL PACKAGE W.A.S. ROBOTIC

To fully reap the potential of the DR Series, WEISS only supplies its Delta Robots in combination with the preconfigured Control Package. The control system can be operated from any common web browser on a PC or laptop. The Control Package is made up of single components that the customer can integrate into its higher-level equipment control system and control environment.



- ✓ Easy commissioning and intuitive programming
- ✓ Web-based user interface
- ✓ Integration into the machine's control cabinet
- ✓ Defined fieldbus interfaces such as Profinet, EtherCAT and more

# ≡ ADVANCED MOTION PLATFORMS AT A GLANCE



- ✓ **Reduced lead time**
- ✓ **Unified control & software system with field bus communications**
- ✓ **Single source solution using standard, proven, high accuracy products**
- ✓ **Wired and integrated control panels**
- ✓ **Reduced integration cost & commissioning time**
- ✓ **Fully tested and efficiently commissioned system**

WEISS understands that being competitive in today's manufacturing environment requires assembly production lines to be equipped with cost-effective and highly efficient automated systems. WEISS Advanced Motion Platforms are engineered and manufactured to deliver optimized performance characteristics (cycle time, availability, production quality) combined with a streamlined order to install process that results in a plug and play solution.

Engineered and built upon proven WEISS rotary, linear and multi-axis gantry platforms, WEISS Advanced Motion Platforms are enhanced and optimized to include handling systems, value-added custom tooling and base plates, machine bases and chassis, control cabinets, wiring and WEISS Application Software (W.A.S. 2).

WEISS Advanced Motion Platforms enable integrators, machine builders and internal machine build groups to scale their scope of deliverables from individual components to an integral solution. Characterized by modularity and a host of proven mechatronic product and digitalized solutions, WEISS Advanced Motion Platforms offer our customers the shortest time to market.

WEISS Advanced Motion Platforms are in operation around the globe in virtually every production environment with a wide variety of application variables, meeting the demands of today's mass production assembly requirements. As a leading supplier of automation platforms and handling products, WEISS customizes Advanced Motion Platforms to optimize and streamline our customer's automation requirements, using proven automation components, including controls and software. This provides the benefits of an integral motion platform from a single source with proven quality products.



INSPIRING AUTOMATION

**WEISS North America, Inc.**

3860 Ben Hur Avenue

Willoughby, Ohio 44094

Phone: 440-269-8031 | Toll Free: 888-934-7762 | Fax: 440-269-8036

[weiss-world.com](http://weiss-world.com) | [info.us@weiss-world.com](mailto:info.us@weiss-world.com)