



FLEX-DIAL CHASSIS SYSTEMS

WEISS COMPONENT SYSTEMS



FLEX-DIAL CHASSIS SYSTEMS

PLUG & PLAY TECHNOLOGY

WEISS FLEX-DIAL CHASSIS SYSTEMS provide you with the opportunity to enhance your manufacturing processes through the use of standard automation platforms.

Our FLEX-DIAL CHASSIS are the only subsystems on the market with a Plug & Play design. You will be delivered a complete hardwired chassis system, equipped with process-capable frames that simply require you to plug them in. The cost of construction, installation and commissioning are reduced to a minimum, thanks to our innovative Plug & Play system solution.



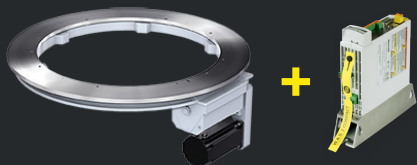
**OPTIONAL HANDLING MODULES
(HP140 AND HP70)**



> 750 FLEX-DIAL CHASSIS SYSTEM

- Servo Driven, Fully Programmable 750Z NR Series Ring Index Table
- Aluminum Tooling Plate - 42" OD x 3/4" Thick
- Steel Stationary Mounting Plate on The Center Opening - 24" OD x 1" Thick
- Steel Base Top Plate with T-Slots for Flex-Mounting on Outer Ring - 84" OD x 1" Thick
- Aluminum Extrusion Guarding With (6) Hinged Guard Doors - 84" OD x 42" Height

»» HARDWARE & ELECTRONICS



Complete with WEISS Hardware Components, WEISS P3 Drive Controllers, Ready-made Cables & Compatible with Third-party Drives (future)

»» SETUP & SOFTWARE



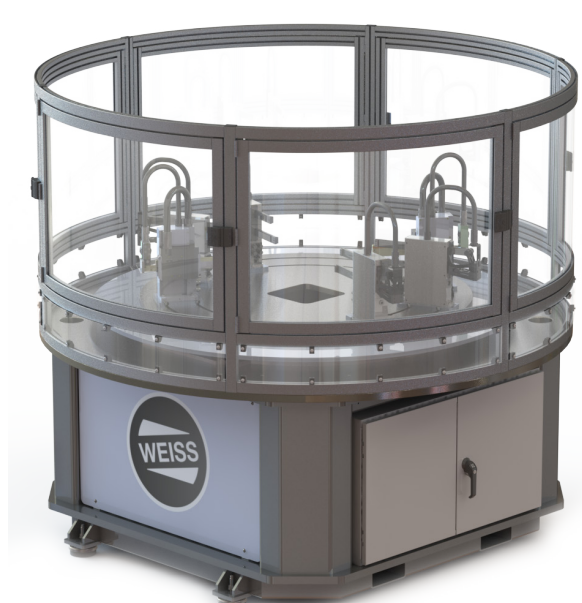
Includes Fast Commissioning, Intuitive Interface, Preconfigured for Automation HW, Maintenance & Diagnostic Functions & Application Data at The Touch of a Button



Available field Ethernet Power

ALL FLEX-DIAL CHASSIS SYSTEMS SHARE THE FOLLOWING STANDARD FEATURES:

- Main Panel - System / Indexer Control with Integrated Safety PLC
- Accessory Panel(s) - WEISS P3 Panels Support Up To (6) WEISS P3 Single, Dual or Multi-Axis (3) Drives (Two Panels Max.)
- WEISS Application Software (W.A.S.2)
- Various Fieldbus Interfaces (i.e. - Ethernet/IP, Profinet, etc...)
- Supplied to Customer Specification

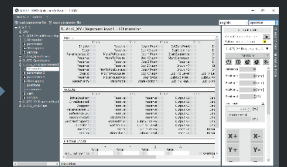
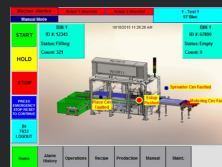


- Servo Driven, Fully Programmable 1500Z NR Series Ring Index Table
- Aluminum Tooling Plate - 67" OD x 3/4" Thick
- Steel Stationary Mounting Plate with T-Slots For Flex-Mounting on Center Ring - 55" OD x 1" Thick
- Steel Base Top Plate with Stationary Mounting On Outer Ring - 96" OD x 1" Thick
- Aluminum Extrusion Guarding With (6) Hinged Guard Doors - 96" OD x 42" Height

dbus interfaces include: Profibus DP, Profinet IO, Modbus/TCP, Etherlink, EtherCAT, Ethernet/IP & Ethernet/UDP



» W.A.S. CONTROLS INTERFACE



Provides flexibility to map IO to fieldbus bits, discrete IO, or both in the same application. Offers Full Unit Position (encoder feedback) unlike some SCARA configurations. Everything you need in one eco-system.



INSPIRING AUTOMATION

WEISS North America, Inc.

3860 Ben Hur Ave. | Willoughby | OH | 44094

Phone: 440-269-8031 | Fax: 440-269-8036 | Toll Free: 1-888-WEISSNA (888-934-7762)

www.weissna.com | info@weissna.com